



Product Spotlight - ELPRO 115E-2

Fully Featured Ethernet I/O Gateway for Industrial applications

The ELPRO 115E-2 is a fully featured Industrial Ethernet I/O and Gateway device that extends both physical I/O for sensors and embedded industrial protocols for communications between PLC's and RTU's, which allows simple, flexible and secure connectivity across SCADA and IIoT networks.

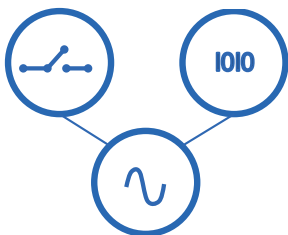
The 115E-2 provides both polled and exception reported messaging using IP based communications. Typically used in industrial applications including water treatment plants, dams / reservoirs, pump stations, power distribution networks through to dewatering in mining applications and well head monitoring in the oil and gas industry.

Being IIoT ready, the 115E-2 can connect to any IP based network including satellite and cellular backhubs, UHF / VHF communication networks and Industrial LAN.

Gateway Protocols



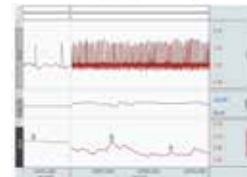
Digital, Analog, Pulsed I/O



Dashboard



Logging



Cyber Secure



Hazardous Area



Redundant Supplies



Smart Battery Charger



Product Spotlight - ELPRO 115E-2

SPECIFICATION	DESCRIPTION
Input and Output	
Digital input	8 digital inputs (shared with outputs), 1-4 configurable as PI or PO On-state voltage: <2.1 Vdc Wetting current: 5 mA Max. I/P pulse rate DI 1/2: 50 kHz, DI 3/4: 1 kHz Max. I/P pulse width DI 1/2: 10 µsec, PI 3/4: 0.2 msec
Digital output	8 digital outputs (shared with inputs), 1-4 configurable as PI or PO Load voltage, DO max. 30 Vdc Load current, DO max. 200mA Max O/P pulse rate, PO max. rate 1 kHz
Analog input	4 AI (2 differential, 2 single ended) Current range: 0-24 mA Current resolution: 14 bits Accuracy (current): 0.1% Voltage input range: AI 1/2: 0-25V, AI 3/4: 0-5V Voltage resolution: 14 bits Accuracy (voltage): 0.1%
Analog output	2 AO (sourcing) Current range: 0-24 mA Current resolution: 13 bits Accuracy (current): 0.1%
Ethernet Port	
Ethernet port	10/100BaseT, RJ-45 connector, IEEE 802.3
Link activity	Link, 100BaseT via LED
Serial Port	
RS-232	EIA-562 (RJ-45 connector)
RS-485	2-pin terminal block, non-isolated
Data rate (bps)	1200, 2400, 4800, 9600, 14400, 19200, 38400, 57600, 76800, 115200, 230400
Serial settings	7/8 data bits, stop/start/parity (configurable)
Protocols and Configuration	
System address	1 to 31-character text string
Protocols supported	TCP/IP, UDP, HTTP, FTP, TFTP, TELNET, Modbus RTU/TCP, DNP3

SPECIFICATION	DESCRIPTION
User configuration	All user-configurable parameters via HTTPS
Configurable parameters	Unit details, I/O mappings and parameters (for more, refer to the user manual) Modbus TCP/ RTU gateway Embedded modbus master/slave for I/O transfer DNP3 I/O and gateway (level 2+)
Security	Secure HTTP protocol
LED Indication and Diagnostics	
LED indication	Power/OK, RS-232, RS-485, digital I/O, analog I/O status
Reported diagnostics	Connectivity information/statistics, system log file
Network management	Optional Network Management System (NMS)
Compliance	
EMC	FCC Part 15, EN 55022, AS 3548, CE
Hazardous area	UL/CSA Class I, Division 2; ATEX; IECEx Na IIC
Safety	IEC 60950 (RoHS compliant)
UL	UL listed
Power Supply	
Nominal supply	10.8-30 Vdc, under/over voltage protection
Average current draw	220 mA @ 12V (idle), 110 mA @ 24V (idle)
General	
Size	5.91" x 7.09" x 1.38" (180 mm x 150 mm x 35 mm)
Housing	IP20-rated high-density thermoplastic
Mounting	DIN rail
Terminal blocks	Removable, max. conductor 12 AWG 0.1 in. ² (2.5 mm ²)
Temperature rating	-40 to +140°F (-40 to +60°C)

For information on ELPRO Technologies products please see our web page at www.elpro.com.au or email sales@elpro.com.au

CONTACT DETAILS

General Enquiries	enquiries@elpro.com.au	+61 7 3352 8600
Sales	sales@elpro.com.au	+61 7 3352 8600
Global Support	support@elpro.com.au	+61 7 3352 8624
EMEA Support	eu-support@elpro.com.au	+61 7 3352 8624
North America Support	us-support@elpro.com.au	+1 855 443 5776

35+ years and still transmitting!