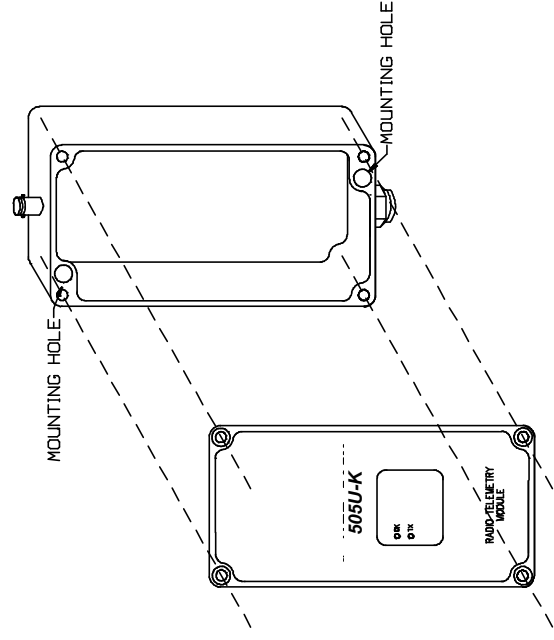


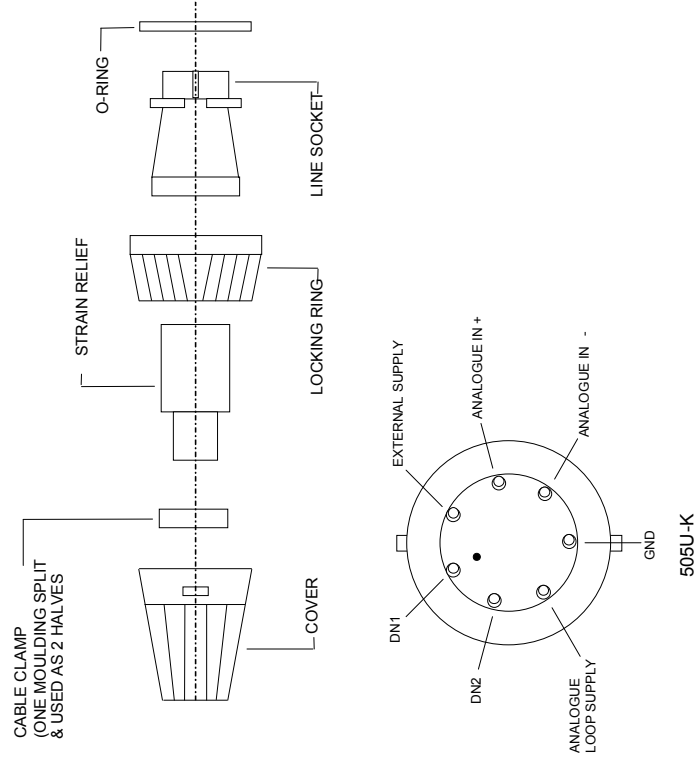
505U-K

Installation Guide

How to Mount the 505U-K

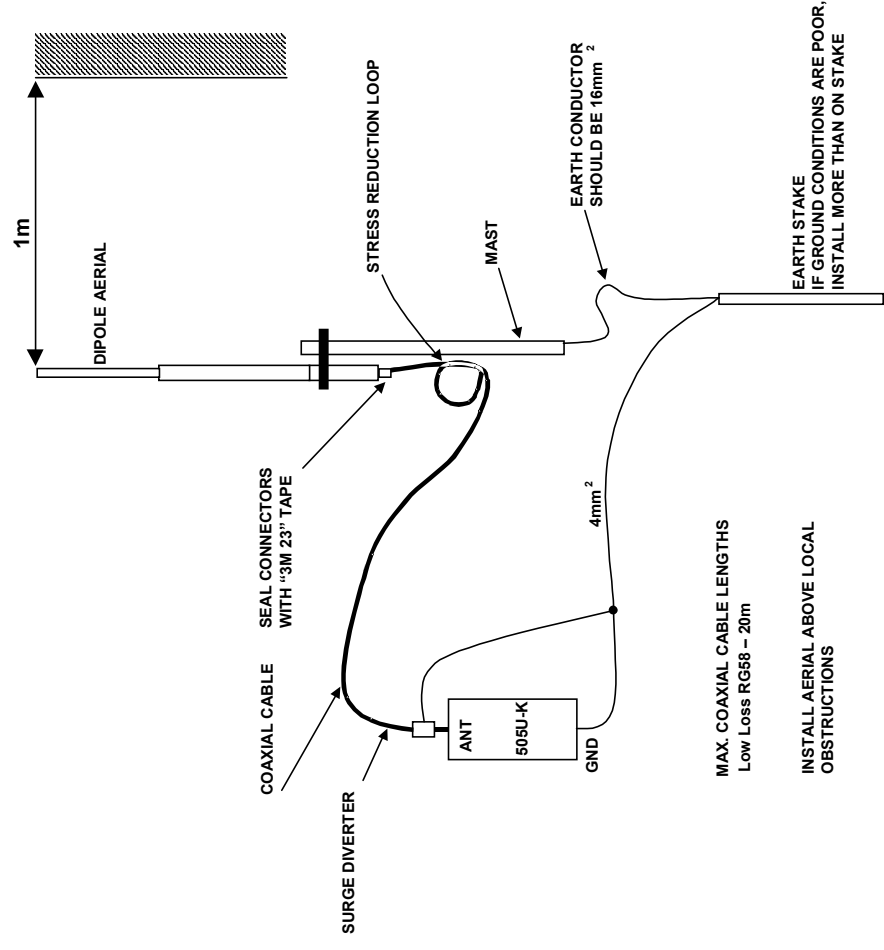


Connection Plug

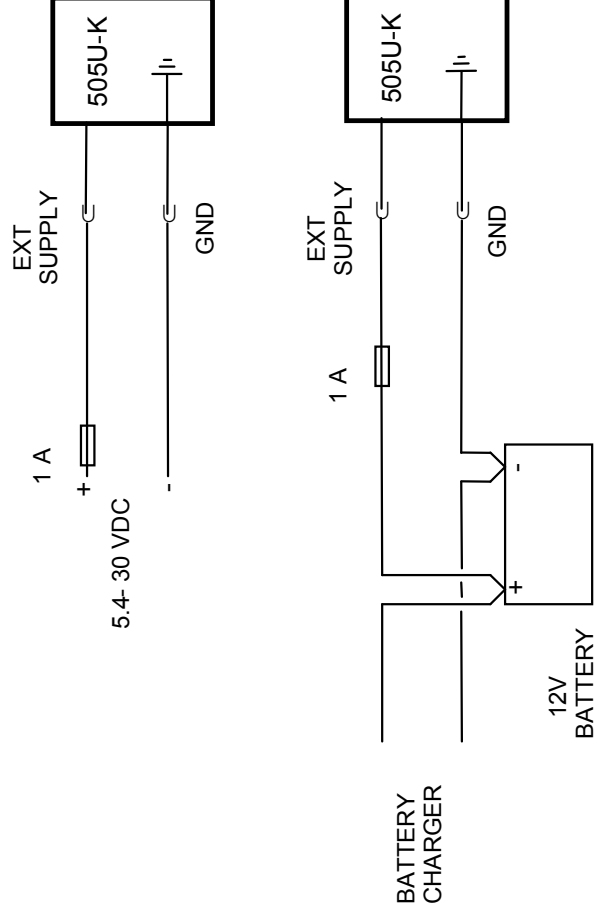


NOTE: VIEW FROM SOLDER CONNECTION SIDE

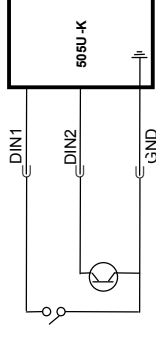
Typical Dipole Installation



External Power Supply Installation

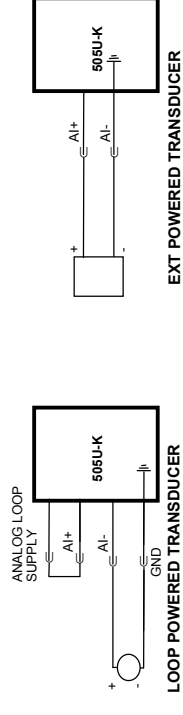


Digital/Pulse Input Connections



Inputs can be voltage free contact or open -collector transistor

Analogue Input Connections



Shaft Encoder Connections

