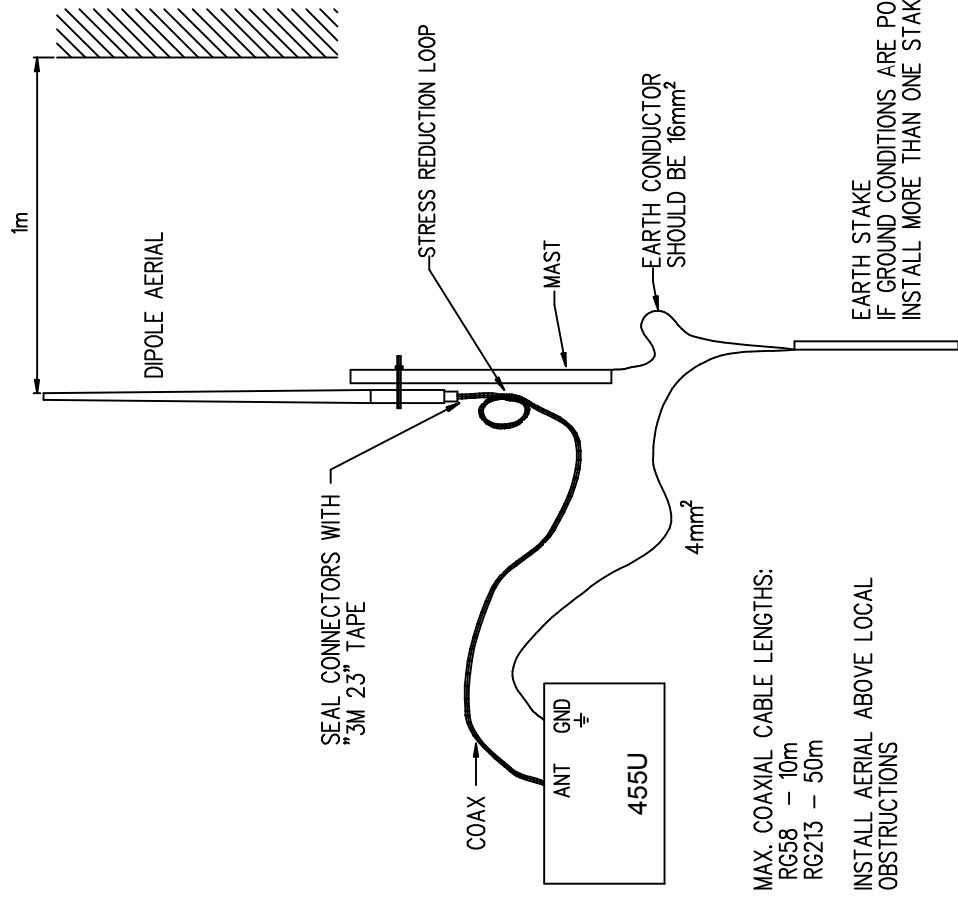


455U-D Installation Guide

Statutory Requirements

Maybe require radio license to operate check with your distributor.

Aerial Installation



MAX. COAXIAL CABLE LENGTHS:
RG58 - 10m
RG213 - 50m

INSTALL AERIAL ABOVE LOCAL OBSTRUCTIONS

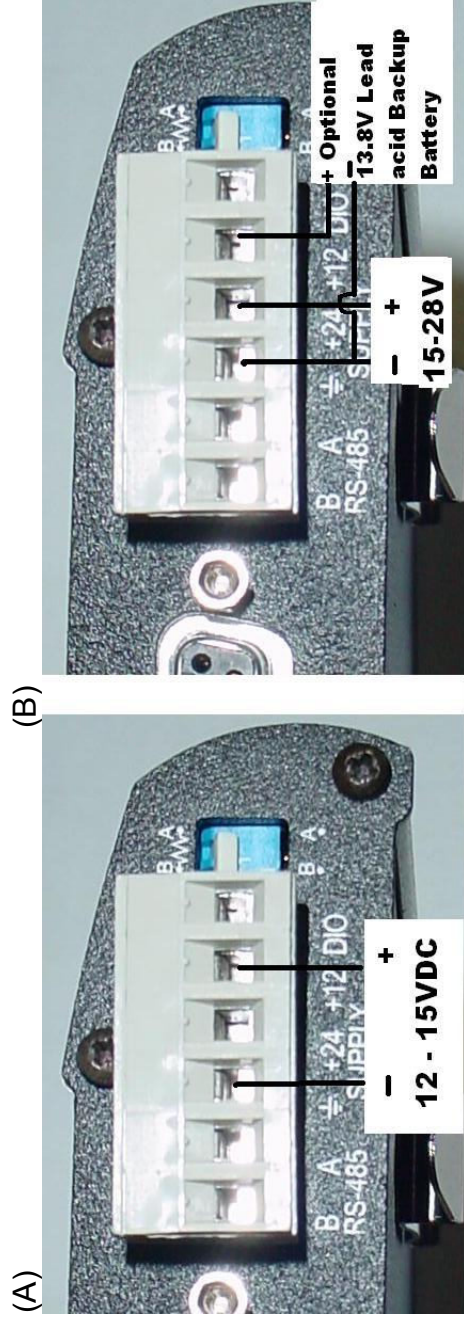
455U-D Wiring (Refer to User Manual for full Details)

Power supply has minimum power requirement of 24VA and may be:

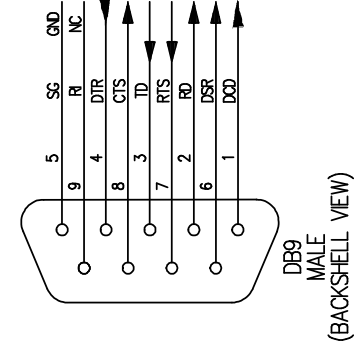
(A) 12-15VDC;

or (B) 15-28VDC (optional Backup Battery);

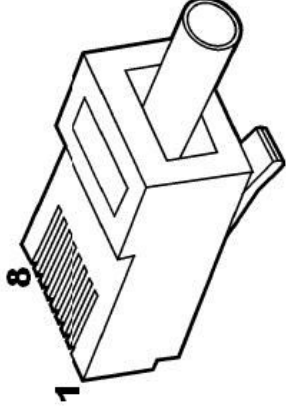
Choose option and wire as shown



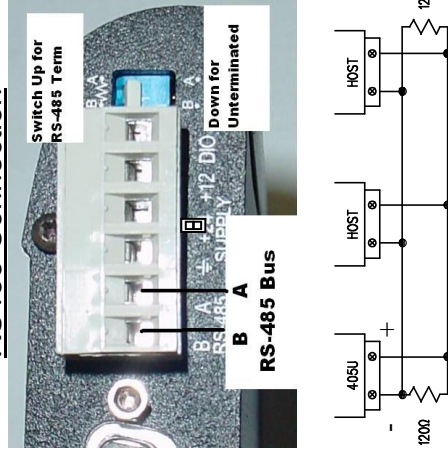
455U RS232 DCE Cable Interface



RJ-45 Configuration Cable



RS485 Connection



To Restore Factory Default Settings

1. Set "default" switch down
2. Turn module power off
3. Turn power back on
4. Return "default" switch to up position

RJ-45	Signal Name	DB9
3	Data Terminal Ready	DTR 4
4	Signal Common	GND 5
5	Receive Data (from Modem)	RXD 2
6	Transmit Data (to Modem)	TXD 3

Use Supplied Configuration Software to configure module.

Modem Configuration (455U-D Only) cfg_455UD.zip

Radio Configuration (All Models) P450H_radio_config.zip