

641M firmware update

1. Introduction

1.1 Overview

This document contains information on uploading a firmware update to the modem.

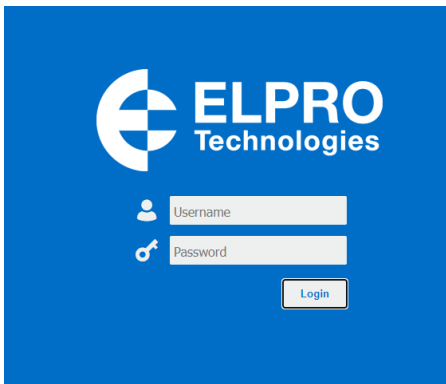
A good technical understanding of the product, and the requirement for this specific application is required.

1.2 Corrections

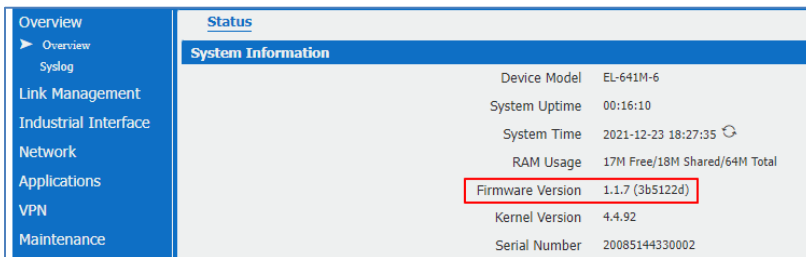
Appreciate for corrections or rectifications to this application note, and if any request for new application notes please email to: support@elpro.com.au

2. Setup

1. Connect to the LAN IP address of the modem. Note: Default IP address is 192.168.1.1.
2. Using a Web browser connect to the IP address and Login.
 - a. Default Username = admin
 - b. Default Password = admin

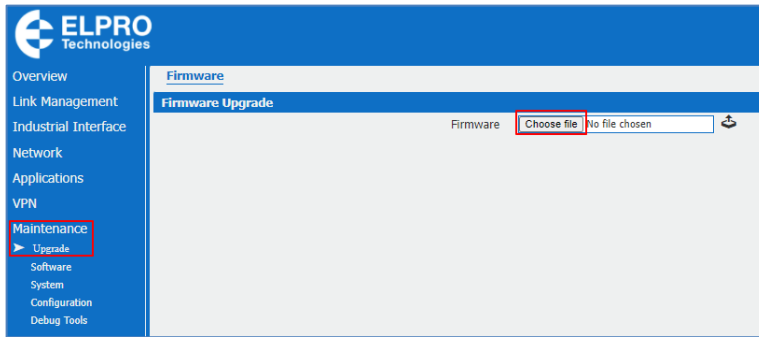


3. From the main login page, Note the Firmware version with build number, i.e., 1.17 (3b5122d).

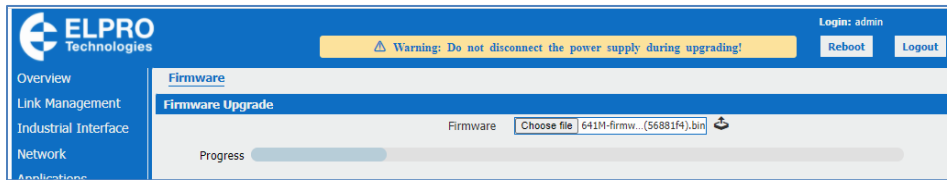


4. Navigate to Maintenance (left hand menu)
5. Click on "Upgrade" menu item.

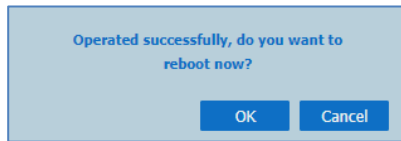
- Click on the “Choose File” button.



- Navigate to the location where you have the new firmware file saved.
- Select the new file, then click the upload button



- Upload progress bar will be shown, **DO NOT** turn the module OFF until the upload has been completed. Doing so could render the module unserviceable.
- When you see the prompt, click the “OK” to reset the and the unit will reboot.



- Login to the unit again from the main screen and confirm the firmware version indicates the new upgraded version.

