



**ACCESSORIES** +

## US/CANADA ANTENNAS 900MHZ BAND

PCTEL Antenna's for use with ELPRO products in the 900MHz band

### OMNI DIRECTIONAL

This antenna series consists of base-matched half wave antennas encapsulated in a heavy duty fiberglass radome with a thick walled aluminum mounting base for reliable long term communication and are suitable for use with all ELPRO 900MHz products. All antennas are Factory tuned, DC grounded and UPS shippable.



### SPECIFICATIONS

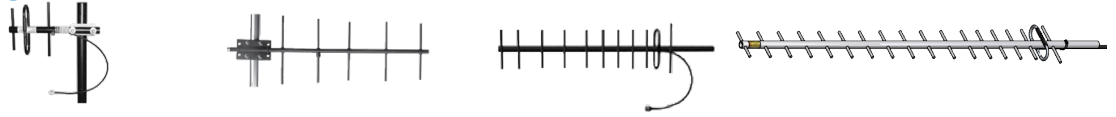
Parameters	MFB8965NF	MFB9153	MFB9155NF	MFB9157NF
Frequency	896-940MHz	902-928MHz	902-928MHz	902-928MHz
Gain	7dBi	5dBi	7dBi	7dBi
H-Plane	Omni directional (360°)	Omni directional (360°)	Omni directional (360°)	Omni directional (360°)
E-Plane	22°	40°	22°	17°
Bandwidth	40MHz		26MHz	
VSWR	Less than 1.5:1 ratio across band			
Polarization	Vertical			
Termination	N-type female with 2' RG213	N-type female	N-type female with 2' RG213	N-type female with 2' RG213
Housing	Fiberglass / aluminium	Fiberglass / aluminium	Fiberglass / aluminium	Fiberglass / aluminium
Mounting	1 -5/16" OD ø	1 -5/16" OD ø	1 -5/16" OD ø	2" OD ø
Wind loading at 160Km/h (99mph)	23lbs-ft (3.2kg-m)	8.6lbs-ft (1.2kg-m)	23lbs-ft (3.2kg-m)	41lbs-ft (5.6kg-m)
Bracket Included	No	No	No	No
<b>Dimensions</b>				
Size (length)	50" (1.3m)	23" (580mm)	50" (1.3m)	95" (2.4m)
Weight	1.75lbs (.78kg)	1.25lbs (.57kg)	1.75lbs (.78kg)	4lbs (1.8kg)

**ACCESSORIES** +US/CANADA ANTENNAS  
900MHZ BAND

# YAGI ANTENNAS

PCTEL's 900 MHz frequency series is engineered to meet the requirements of a high gain, broadband, premium quality antenna. The antenna is manufactured using high strength 6061-T6 aluminum to withstand heavy ice, high wind and other harsh conditions. Suitable for use with all ELPRO 900MHz products.

## SPECIFICATIONS



Parameters	BMYD890G	BMOY9006	BMYD890M	BMY8900
Frequency	890-960MHz	890-960MHz	890-960MHz	890-960MHz
Gain	8.6dBi	12.1dBi	14.1dBi	16.1dBi
H-Plane	100°	50°	40°	32°
E-Plane	62°	45°	34°	26°
F/B ratio	15dB	15dB	20dB	25dB
Bandwidth	70Mhz	70Mhz	70Mhz	70Mhz
VSWR	Less than 1.5:1 ratio across band			
Polarization	Vertical or Horizontal as per license application			
Termination	N-type fem on 2' (600mm) RG213 tail	N-type female-boom end feed	N-type fem on 2' (600mm) RG213 tail	N-type fem on 2' (600mm) RG213 tail
Housing	Anodized 6061-T6 aluminum	Anodized 6061-T6 aluminum	Anodized 6061-T6 aluminum	Anodized 6061-T6 aluminum
Mounting	1.25"-2.5" OD ø	1.25"-2.5" OD ø	1.25"-2.5" OD ø	1.25"-2.5" OD ø
Wind loading at 150Km/h (99mph)	6.2lbs (2.8kg)	9.5lbs (4.5kg)	26.7lbs (12.1kg)	45.5lbs (20.6kg)
Bracket Included	Yes (BMC1001)	Yes (BMC1001)	Yes (BMC1001)	Yes (BMC1001)
<b>Dimensions</b>				
Size (length)	12"x6.75" (304x171mm)	23.6"x6.75" (600x171mm)	36"x6.75" (905x171mm)	63"x6.75" (1.6m.x171mm)
Weight	1.4lbs (0.65kg)	1.1lbs (0.5kg)	2.5lbs (1.1kg)	3.6lbs (1.6kg)

## HOW TO ORDER **Note: Shipping to other countries, also available - Contact US Sale Team for details**

### Order Codes

<b>ANTMFB8965NF</b>	Omni directional, 890-960MHz, 5dBi Gain, 51" (1.3m), N Type male on 2' tail, Bracket not included - add bracket from below
<b>ANTMFB9153</b>	Omni directional, 890-960MHz, 3dBi Gain, 23" (580mm), N Type male on 2' tail, Bracket not included - add bracket from below
<b>ANTMFB9155NF</b>	Omni directional, 890-960MHz, 5dBi Gain, 51" (1.3m), N Type male on 2' tail, Bracket not included - add bracket from below
<b>ANTMFB9157NF</b>	Omni directional, 890-960MHz, 7dBi Gain, 95" (2.4m), N Type male on 2' tail, Bracket not included - add bracket from below
<b>ANTBMYD890G</b>	Directional Yagi, 890-960MHz, 8.6dBi Gain, 3 Element, 12" (0.4m), N Type female on 2' tail, BMC1001 mounting bracket included
<b>ANTBMOY9006</b>	Directional Yagi, 890-960MHz, 12.1dBi Gain, 6 Element, 23" (0.3m), N Type Bulkhead, BMC1001 mounting bracket included
<b>ANTBMYD890M</b>	Directional Yagi, 890-960MHz, 14.1dBi Gain, 11 Element, 36" (0.6m), N Type female on 2' tail, BMC1001 mounting bracket included
<b>ANTBMYD8900</b>	Directional Yagi, 890-960MHz, 16.1dBi Gain, 18 Element, 63" (1.6m), N Type female on 2' tail, BMC1001 mounting bracket included
<b>ANT-MMK12-HD</b>	Mounting bracket - Heavy Duty Sand Cast Mounting Bracket.
<b>ANT-BR-BAM1009</b>	Mounting bracket - Aluminum L Bracket for mounting to parallel or perpendicular pipe or mast.

## CONTACT

### Australia

ELPRO Technologies  
29 Lathe Street  
Virginia QLD 4014  
**T** +61 7 3352 8600  
**E** sales@elprotech.com  
**W** elprotech.com

### USA

ELPRO Technologies Inc  
2028 East Ben White Boulevard  
#240-5656 Austin, TX 78741-6931  
**T** +1 855 443 5776  
**E** sales@elprotech.com  
**W** elprotech.com

## INQUIRIES

Simply send us an email at [sales@elprotech.com](mailto:sales@elprotech.com), contact your local distributor, or phone **+61 7 3352 8600**