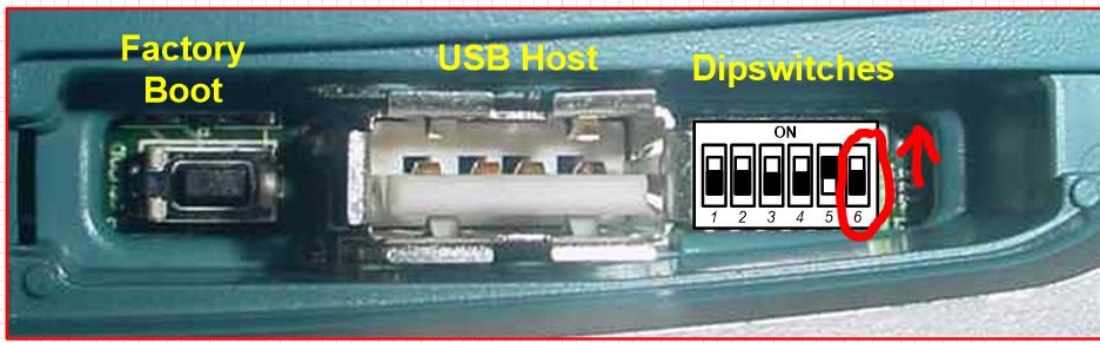


## Factory Default a 115E-2.

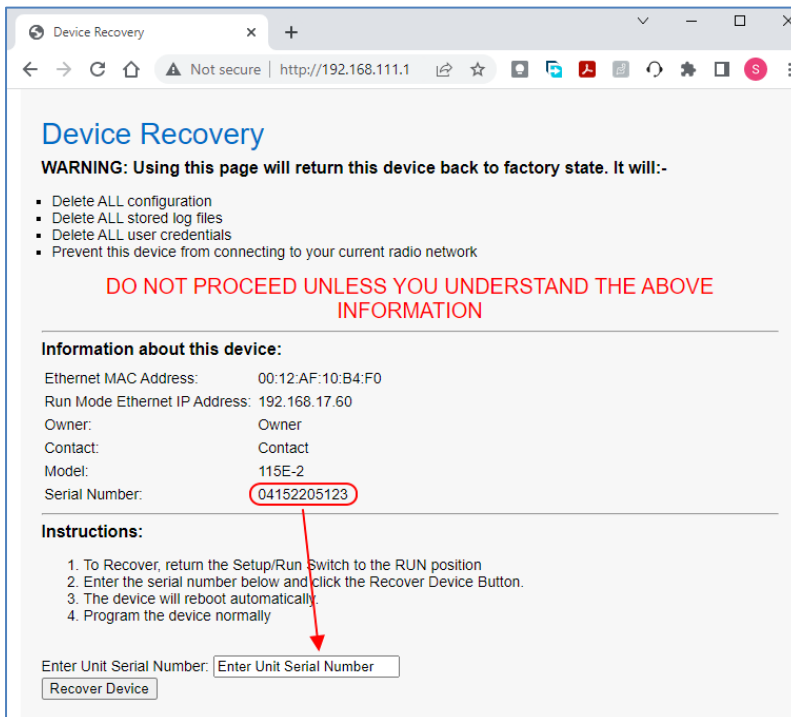
Under the side panel you will see the Dips switches.

Switch the 6<sup>th</sup> Dip switch (one on the far right, looking at the picture) to ON (Up) and then reset the unit.

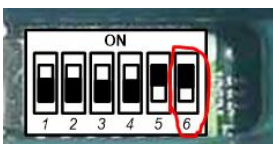


It will now only be able to connect through the USB cable and you will need to enter the IP address 192.168.111.1 to get to the main web Page.

When you connect you should see the following web page.



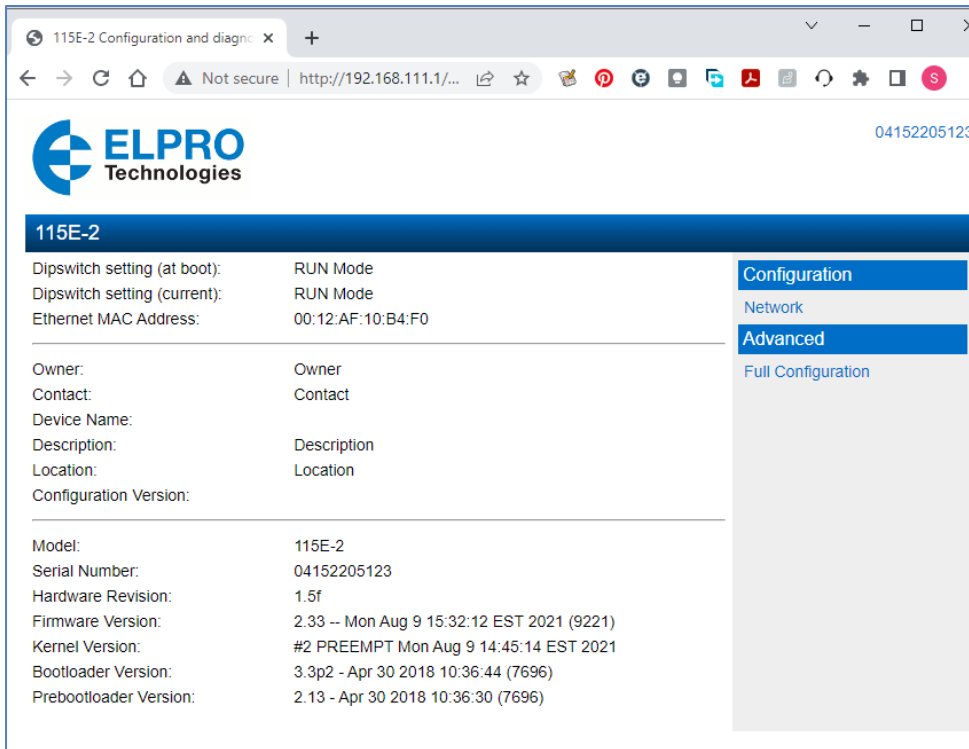
Now switch the Dip switch under the side panel back to the normal run position (down).



From here you need to copy the Serial number of the Radio into the Text box “Enter Unit Serial Number”, the Serial number is displayed on the screen, so you can easily cut and paste.

Then press the “Recover Device” button, the Radio will then reboot, and when it has finished rebooting (Solid Green PWR LED), we can then connect to it using a Web browser and USB cable @ 192.168.111.1.

**Note You will need to remove USB cable and then plug back in to re-initiate the USB connection.**



### Amendment Register:

Issue No.	Date	Details of Amendment
1.0	29/09/22	Draft Issue